



# SOLINSA

Support of Learning and Innovation  
Networks for Sustainable Agriculture

Agricultural Knowledge Systems In Transition:  
Towards a more effective and efficient support of Learning  
and Innovation Networks for Sustainable Agriculture

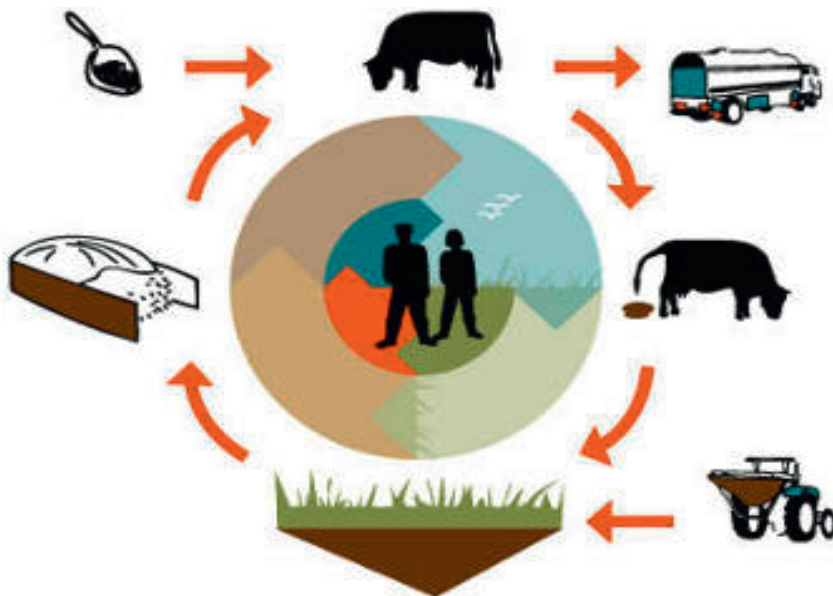
solinsa.net

# DUURZAAM BOER BLIJVEN / SUSTAINABLE DAIRY FARMING DRENTHE (AND OTHER PROVINCES IN THE NETHERLANDS)

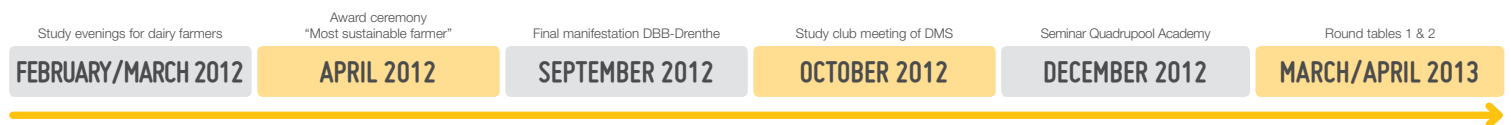


## 01. SHORT PRESENTATION OF THE LINSA

- A. Aim:** 1. optimisation of the nutrient cycle and  
2. improving farmers craftmanship and skills
- B. Who is member:** dairy farmers and facilitating consultants
- C. How is it organised?** Informal network of study clubs



## 02. INTERACTIONS WITH THE SOLINSA PROJECT TEAM DURING THREE YEARS



## 03. HOW TO SUPPORT A LINSA ?

- Provide legislative space for experimentation
- Study clubs are effective (but also expensive)
- Monitoring and evaluation of practices are important