



# SOLINSA

Support of Learning and Innovation  
Networks for Sustainable Agriculture

Agricultural Knowledge Systems In Transition:  
Towards a more effective and efficient support of Learning  
and Innovation Networks for Sustainable Agriculture

solinsa.net

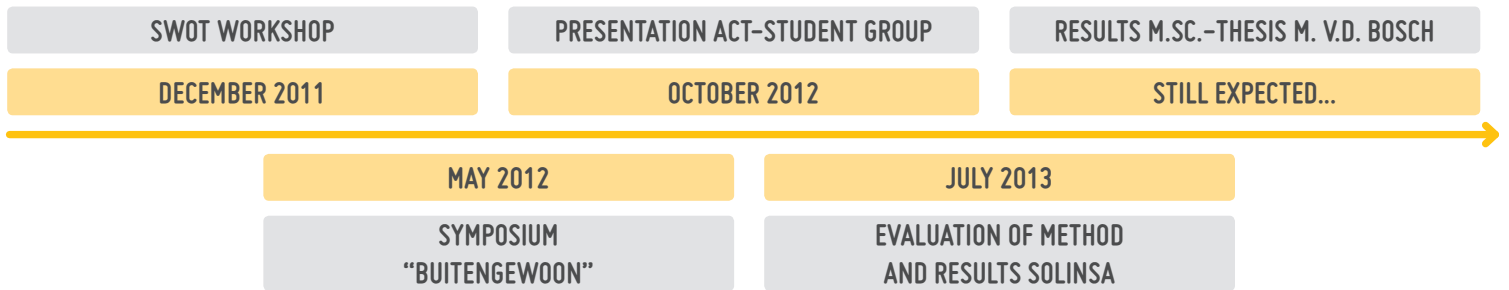
# COOPERATIVE FARMERS AND CARE MID-EASTERN PART OF THE NETHERLANDS



## 01. THE LINSA

- A. Aim:** defend the interests of her members, for instance by negotiating 'care contracts'
- B. Membership:** ±130 professional care farmers
- C. Organisation:** as a formal cooperative

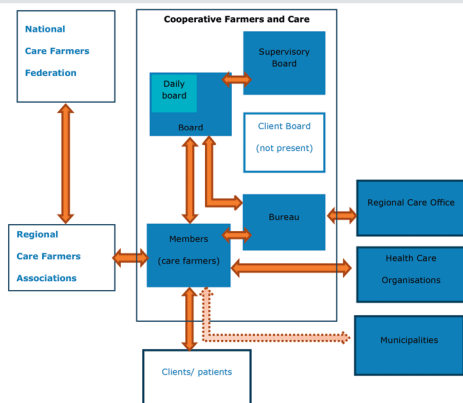
## 02. INTERACTIONS WITH THE SOLINSA PROJECT TEAM OVER THREE YEARS



## 03. HOW TO SUPPORT A LINSA ?

- Find the appropriate level to provide support national vs regional, but also board vs working groups
- From AKIS perspective: use (lots of) students!
- Help to develop and maintain links to regional authorities

## 04. QUOTATION AND PICTURE



*The cooperative builds networks by linking policy, research, education with practice. It's power is that it focusses on tangible results.*



WAGENINGEN UNIVERSITY  
WAGENINGEN UR

